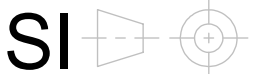
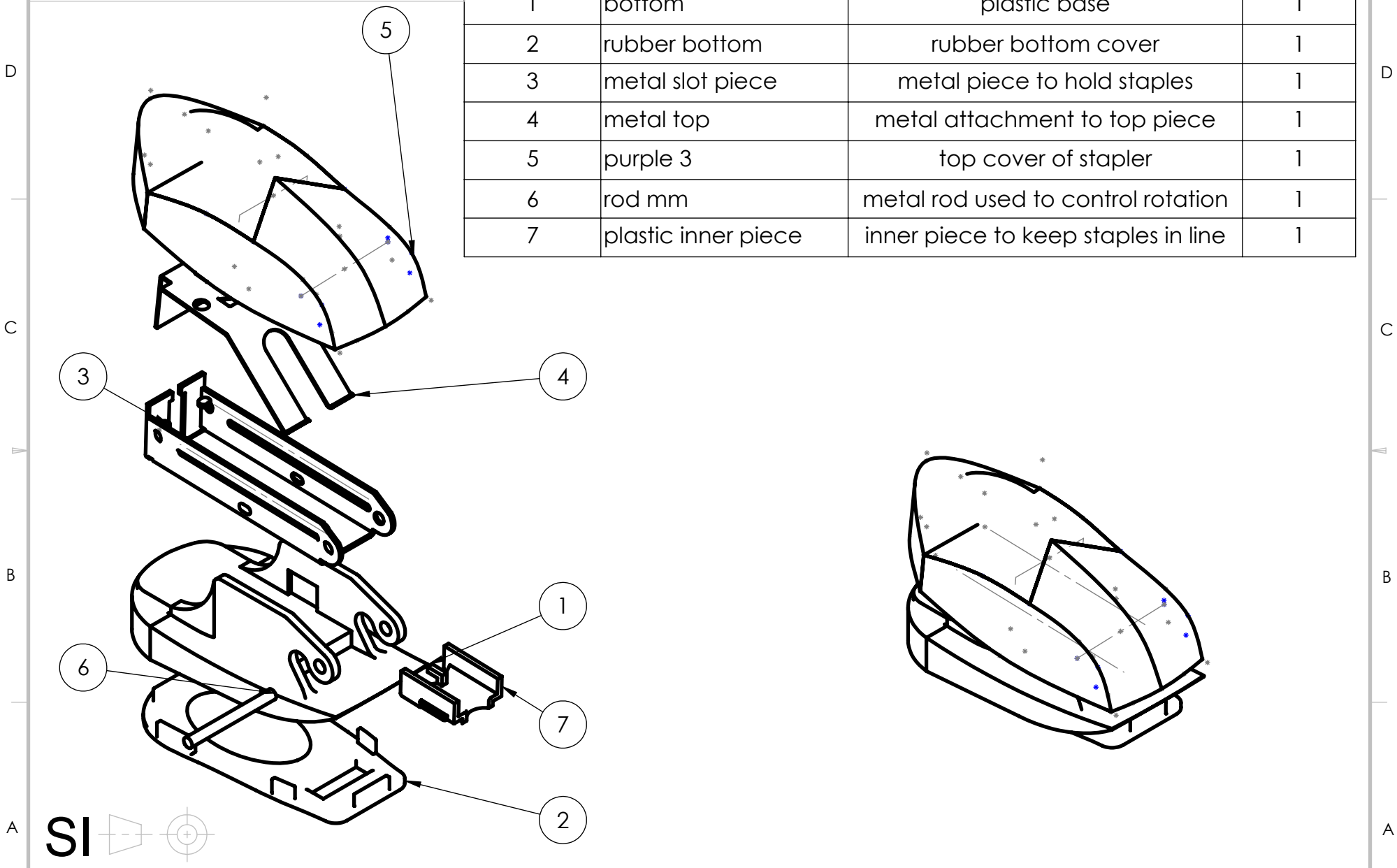


THE INFORMATION CONTAINED IN THIS DRAWING IS THE SOLE PROPERTY OF NC STATE UNIVERSITY. ANY REPRODUCTION IN PART OR WHOLE WITHOUT THE WRITTEN PERMISSION OF NC STATE UNIVERSITY IS PROHIBITED.  
FILE: final assembly

ITEM NO.	PART NUMBER	DESCRIPTION	QTY.
1	bottom	plastic base	1
2	rubber bottom	rubber bottom cover	1
3	metal slot piece	metal piece to hold staples	1
4	metal top	metal attachment to top piece	1
5	purple 3	top cover of stapler	1
6	rod mm	metal rod used to control rotation	1
7	plastic inner piece	inner piece to keep staples in line	1



**NORTH CAROLINA STATE UNIVERSITY**  
P.O. BOX 7801  
Raleigh, North Carolina

UNLESS OTHERWISE SPECIFIED  
DIMENSIONS ARE IN MILLIMETERS  
TOLERANCES ARE:  
FRACTIONS .XX+ .XX +1  
DECIMALS .XXX+ .XXX  
ANGLES +1

DRAWN  
**ERIN MCENENY**  
MATERIAL  
**ASSORTED**

DATE  
**12/2/2019**  
SCALE  
**1:1**

TITLE  
**STAPLER ASSEMBLY**  
SIZE  
**A**  
PRT. NO.  
**#**  
**1**